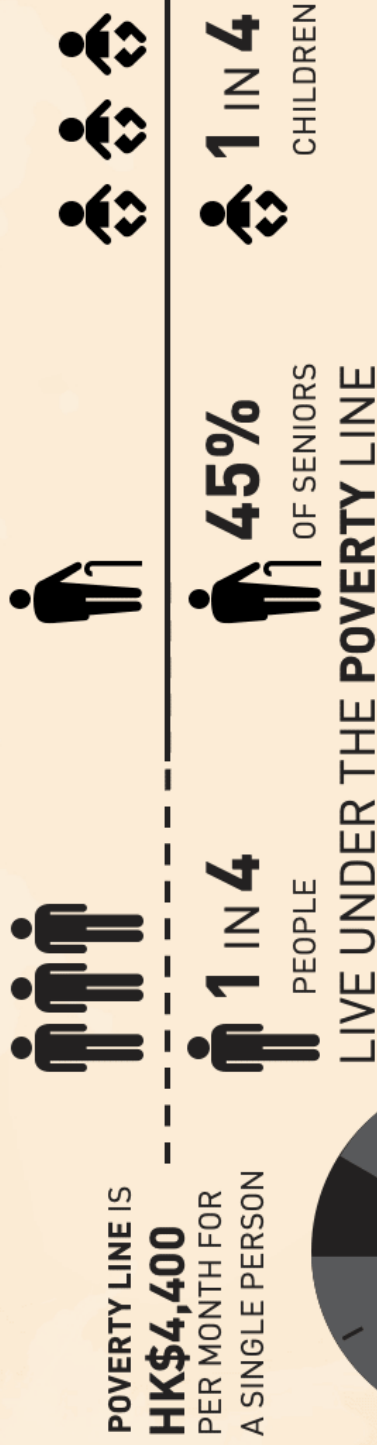
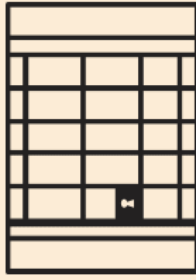
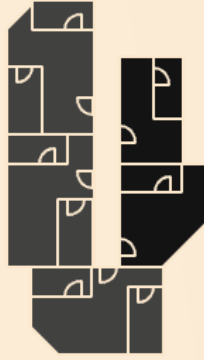


# POVERTY FACTS AND FIGURES



**209,700** PEOPLE LIVE IN  
SUB-DIVIDED UNITS,  
COFFINS, CAGE HOMES &  
ROOFTOPS



**28%**  
OF SUB-  
DIVIDED UNITS  
HAVE NO  
KITCHEN



**1,500+**  
STREET  
SLEEPERS

LOW-INCOME FAMILIES

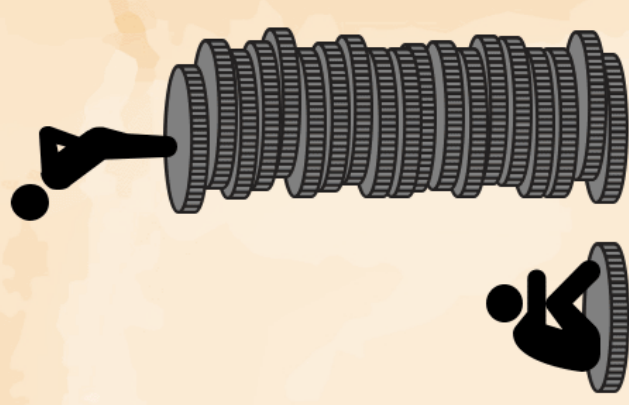
**SPEND 31%**

OF THEIR INCOME  
ON FOOD



**DAILY FOOD  
EXPENDITURE**

FOR LOW INCOME  
FAMILIES = **HK\$58** PER PERSON



HK HAS SOME OF THE HIGHEST  
**INCOME INEQUALITY**  
AMONG DEVELOPED ECONOMIES



Sources: Hong Kong Poverty Situation Report 2020

Thematic Report: Household Income Distribution in Hong Kong 2016  
Supplementary Poverty Line Analysis: Expenditure Patterns of Poor  
Households in 2015

Hong Kong Homelessness Census 2021  
Labour Department, May 2019, Statutory Minimum Wage



樂餉社  
Feeding  
Hong Kong