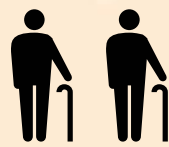


POVERTY FACTS AND FIGURES

POVERTY LINE IS
HK\$4,500
PER MONTH FOR
A SINGLE PERSON



1 IN 5
WOMEN



1 IN 3
SENIORS



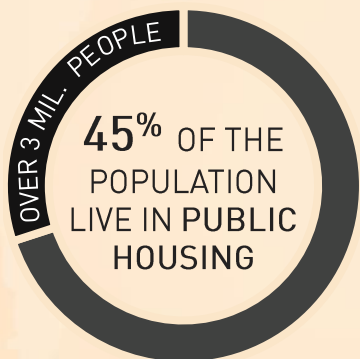
1 IN 5
CHILDREN

LIVE UNDER THE **POVERTY LINE**

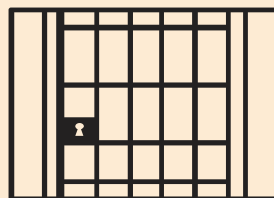
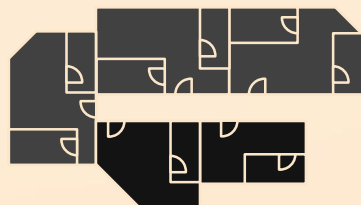


664,000+
WORKING POOR

HK RANKS FIRST IN
INCOME INEQUALITY
AMONG DEVELOPED ECONOMIES



226,340 PEOPLE LIVE IN
SUB-DIVIDED UNITS,
COFFINS, CAGE HOMES &
ROOFTOPS

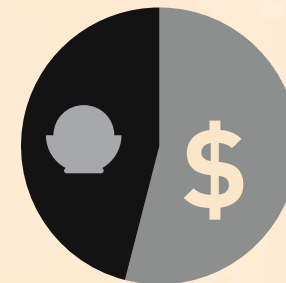


7.3%
SUB-DIVIDED
UNITS HAVE
NO KITCHEN

1400+
STREET
SLEEPERS

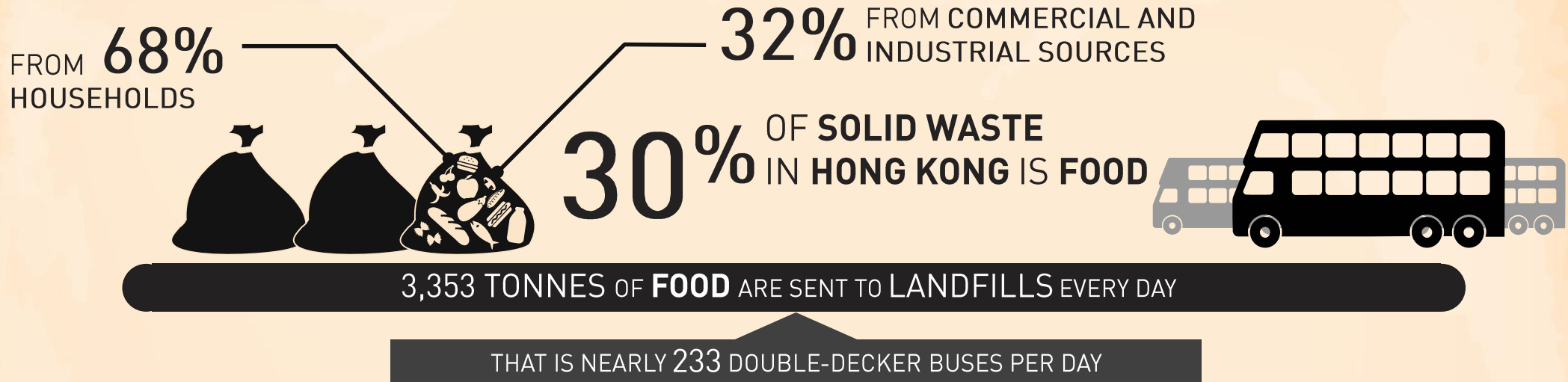


LOW-INCOME FAMILIES
SPEND
31%
OF THEIR INCOME
ON FOOD



DAILY FOOD
EXPENDITURE
FOR LOW INCOME
FAMILIES = **HK\$37** PER PERSON

FOOD WASTE FACTS AND FIGURES



ALL **THREE** OF HONG KONG'S LANDFILLS REQUIRE EXTENSIONS. REDUCING WASTE IS A MORE SUSTAINABLE SOLUTION.



WET MARKETS WASTE **14 TONNES** OF EDIBLE FOOD PER DAY



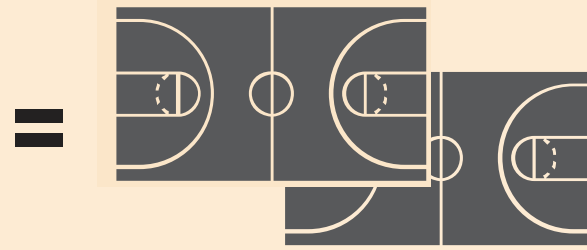
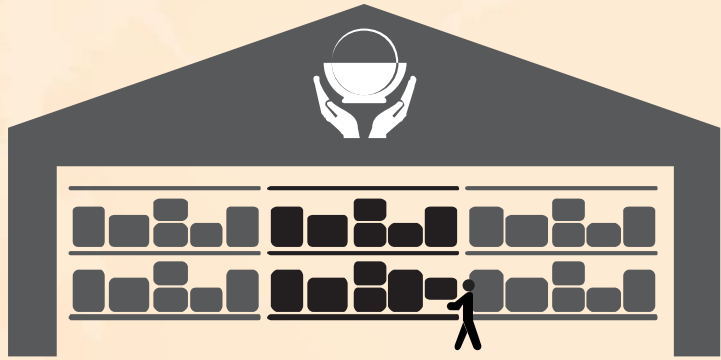
FEEDING HONG KONG

FACTS AND FIGURES

THE FEEDING HK FOODBANK IS

11,500 SQUARE FEET

(AS BIG AS 2 BASKETBALL COURTS)



IT INCLUDES A
WALK-IN FRIDGE
AND **FREEZER**



60 TONNES

 OF PRODUCT
RESCUED AND SORTED
PER MONTH

250,000
MEALS

SUPPORTED
PER MONTH



23
STAFF



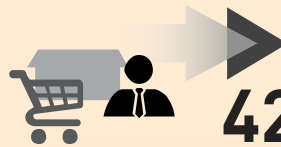
85+
VOLUNTEERS
PER WEEK



13,500+
VOLUNTEER HOUR
PER ANNUM



4
VEHICLES



420+
FOOD
DONORS



150+
PARTNER
CHARITIES



230+
COMMUNITY
PARTNERS