

# POVERTY FACTS AND FIGURES

POVERTY LINE IS  
**HK\$4,500**  
PER MONTH FOR  
A SINGLE PERSON



**1 IN 5**  
PEOPLE



**1 IN 3**  
SENIORS



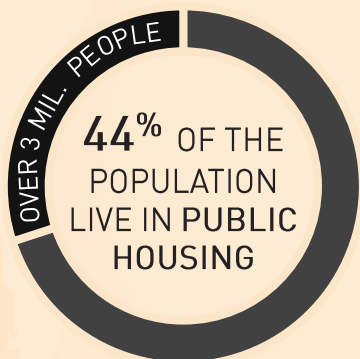
**1 IN 5**  
CHILDREN

LIVE UNDER THE **POVERTY LINE**

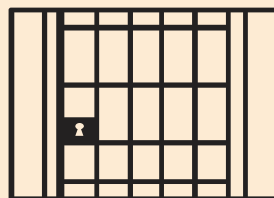
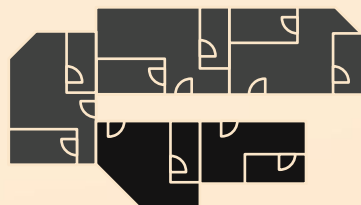


**920,000+**  
WORKING POOR

HK RANKS FIRST IN  
**INCOME INEQUALITY**  
AMONG DEVELOPED ECONOMIES



**209,700** PEOPLE LIVE IN  
SUB-DIVIDED UNITS,  
COFFINS, CAGE HOMES &  
ROOFTOPS

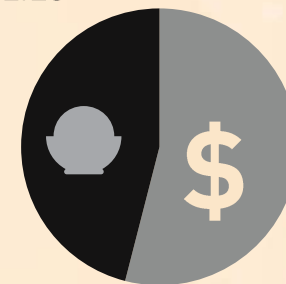


**37%**  
SUB-DIVIDED  
UNITS HAVE  
NO KITCHEN

**1000+**  
STREET  
SLEEPERS



LOW-INCOME FAMILIES  
SPEND **46%**  
OF THEIR INCOME  
ON FOOD



DAILY FOOD  
EXPENDITURE  
FOR LOW INCOME  
FAMILIES = **HK\$30** PER PERSON

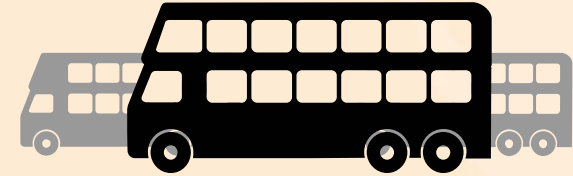
# FOOD WASTE FACTS AND FIGURES

FROM **68%**  
HOUSEHOLDS



**32%** FROM COMMERCIAL AND  
INDUSTRIAL SOURCES

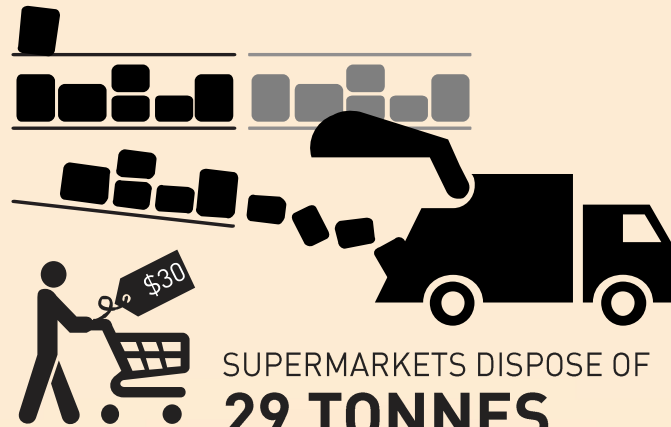
**30%** OF SOLID WASTE  
IN HONG KONG IS FOOD



**3,600 TONNES** OF **FOOD** ARE SENT TO LANDFILLS EVERY DAY

THAT IS NEARLY **250** DOUBLE-DECKER BUSES PER DAY

ALL **THREE** OF  
**HONG KONG'S LANDFILLS**  
REQUIRE EXTENSIONS. REDUCING WASTE  
IS A MORE SUSTAINABLE SOLUTION.



SUPERMARKETS DISPOSE OF  
**29 TONNES**  
OF **EDIBLE FOOD** PER DAY

WET MARKETS WASTE  
**14 TONNES**  
OF **EDIBLE FOOD**  
PER DAY

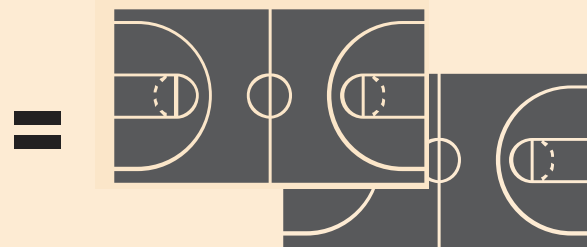
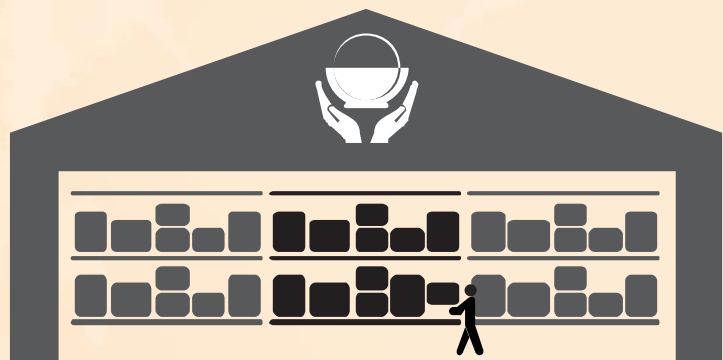


# FEEDING HONG KONG

## FACTS AND FIGURES

THE FEEDING HK FOODBANK IS

**11,500** SQUARE FEET  
(AS BIG AS **2** BASKETBALL COURTS)



IT INCLUDES A  
**WALK-IN FRIDGE**  
AND **FREEZER**



**60 TONNES** OF PRODUCT  
RESCUED AND SORTED  
PER MONTH



**250,000**  
MEALS

SUPPORTED  
PER MONTH



**23**  
STAFF



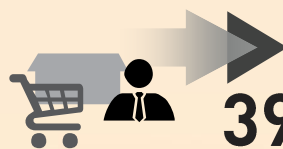
**85+**  
VOLUNTEERS  
PER WEEK



**13,500+**  
VOLUNTEER HOUR  
PER ANNUM



**4**  
VEHICLES



**390+**  
FOOD  
DONORS



**140+**  
PARTNER  
CHARITIES



**230+**  
COMMUNITY  
PARTNERS