

# POVERTY FACTS AND FIGURES

POVERTY LINE IS  
**HK\$4,000**  
PER MONTH FOR  
A SINGLE PERSON



**1 IN 5**  
PEOPLE



**1 IN 3**  
SENIORS

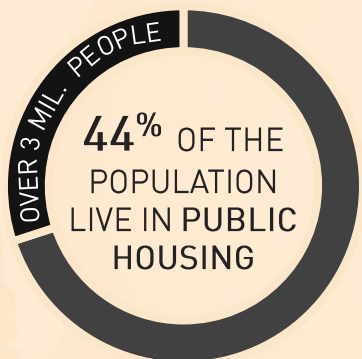


**1 IN 5**  
CHILDREN

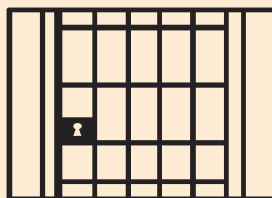
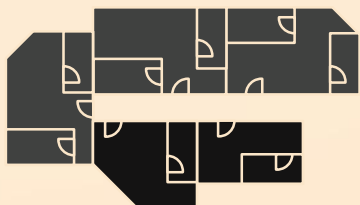
LIVE UNDER THE **POVERTY LINE**



HK RANKS SECOND IN  
**INCOME INEQUALITY**  
AMONG DEVELOPED ECONOMIES



**199,900** PEOPLE LIVE IN  
SUB-DIVIDED UNITS,  
COFFINS, CAGE HOMES &  
ROOFTOPS



**37%**  
SUB-DIVIDED  
UNITS HAVE  
NO KITCHEN

**1000+**  
STREET  
SLEEPERS

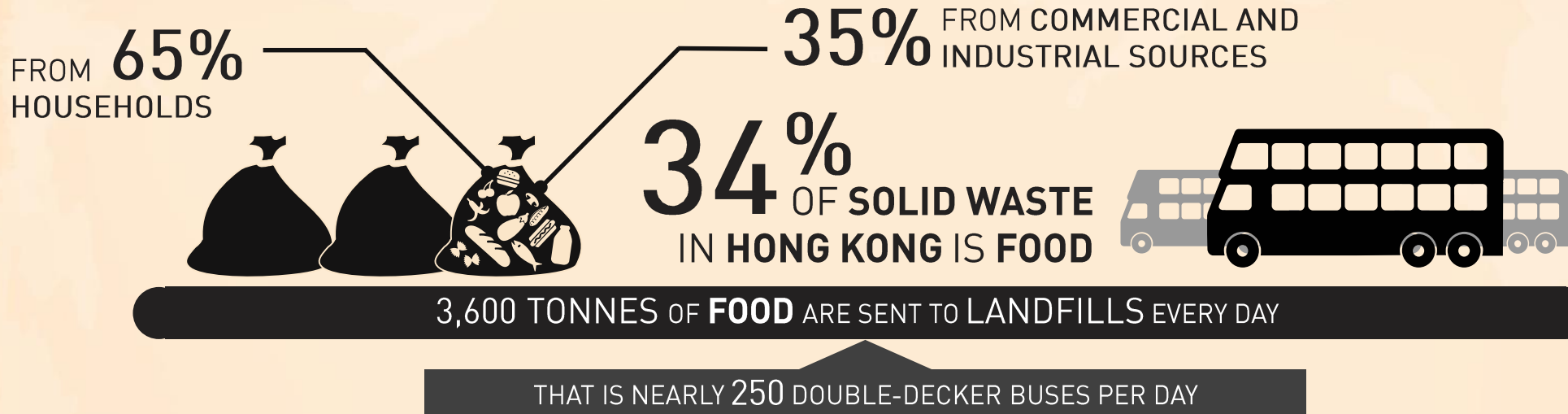


LOW-INCOME FAMILIES  
SPEND **46%**  
OF THEIR INCOME  
ON FOOD



DAILY FOOD  
EXPENDITURE  
FOR LOW INCOME  
FAMILIES = **HK\$30** PER PERSON

# FOOD WASTE FACTS AND FIGURES



ALL **THREE** OF  
HONG KONG'S LANDFILLS  
WILL BE FULL BY **2020**



WET MARKETS WASTE  
**14 TONNES**  
OF EDIBLE FOOD  
PER DAY



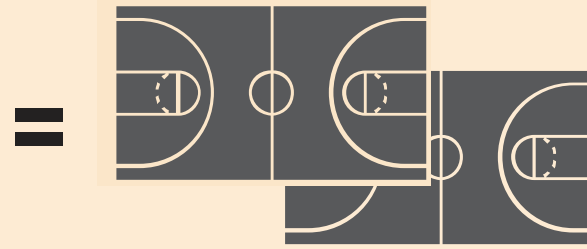
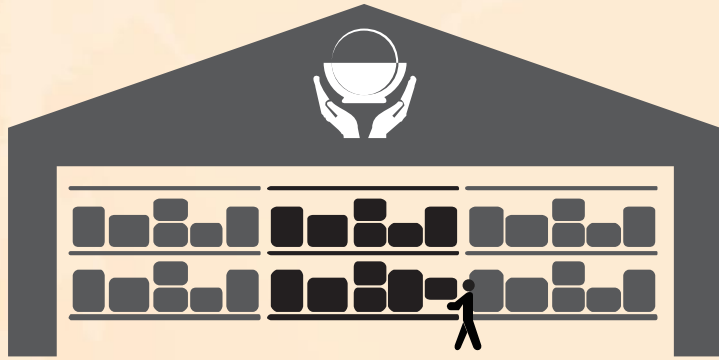
# FEEDING HONG KONG

## FACTS AND FIGURES

THE FEEDING HK FOODBANK IS

# 11,500 SQUARE FEET

(AS BIG AS 2 BASKETBALL COURTS)



IT INCLUDES A  
**WALK-IN FRIDGE**  
AND **FREEZER**



# 69 TONNES

OF PRODUCT  
RESCUED AND SORTED  
PER MONTH



# 180,000

MEALS

SUPPORTED  
PER MONTH



# 23

STAFF



# 200+

VOLUNTEERS  
PER WEEK



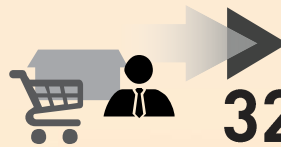
# 19,000

VOLUNTEER HOUR  
PER ANNUM



# 4

VEHICLES



# 320+

FOOD  
DONORS



# 130+

PARTNER  
CHARITIES



# 230+

COMMUNITY  
PARTNERS