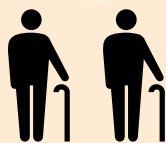


POVERTY FACTS AND FIGURES

POVERTY LINE IS
HK\$4,000
PER MONTH FOR
A SINGLE PERSON



1 IN 5
PEOPLE

1 IN 3
SENIORS

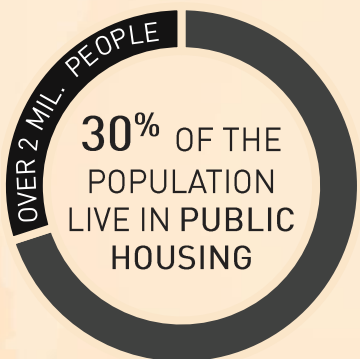
1 IN 5
CHILDREN

LIVE UNDER THE **POVERTY LINE**

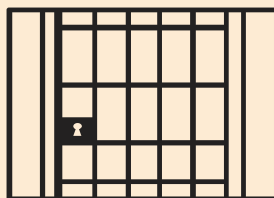


600,000+
WORKING POOR

HK RANKS FIRST IN
INCOME INEQUALITY
AMONG DEVELOPED ECONOMIES

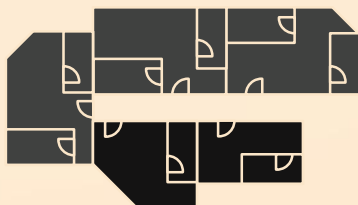
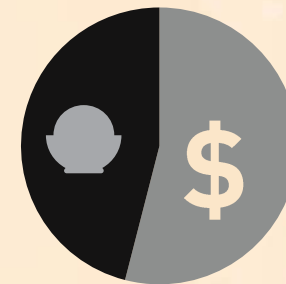


199,900 PEOPLE LIVE IN
SUB-DIVIDED UNITS,
COFFINS, CAGE HOMES &
ROOFTOPS



37%
SUB-DIVIDED
UNITS HAVE
NO KITCHEN

LOW-INCOME FAMILIES
SPEND **46%**
OF THEIR INCOME
ON FOOD



1600+
STREET
SLEEPERS



DAILY FOOD
EXPENDITURE
FOR LOW INCOME
FAMILIES = **HK\$30** PER PERSON

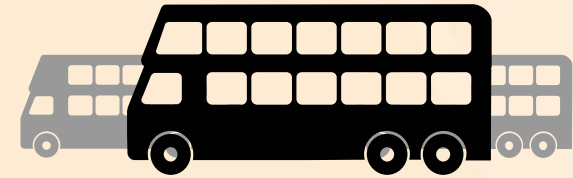
FOOD WASTE FACTS AND FIGURES

FROM **62%**
HOUSEHOLDS



38% FROM COMMERCIAL AND
INDUSTRIAL SOURCES

35% OF SOLID WASTE
IN HONG KONG IS FOOD



3,600 TONNES OF **FOOD** ARE SENT TO LANDFILLS EVERY DAY

THAT IS NEARLY **250** DOUBLE-DECKER BUSES PER DAY

ALL **THREE** OF
HONG KONG'S LANDFILLS
WILL BE FULL BY **2020**



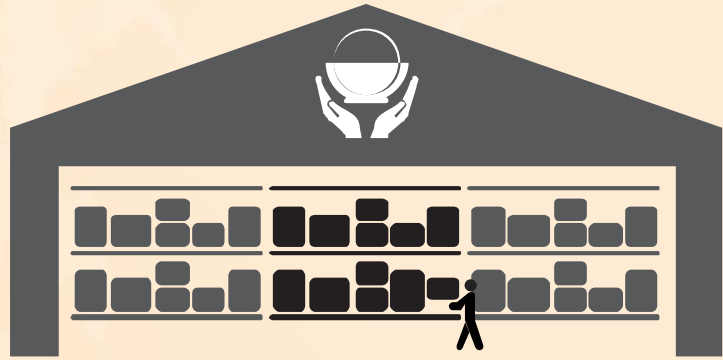
SUPERMARKETS DISPOSE OF
29 TONNES
OF EDIBLE FOOD PER DAY

WET MARKETS WASTE
14 TONNES
OF EDIBLE FOOD
PER DAY



FEEDING HONG KONG

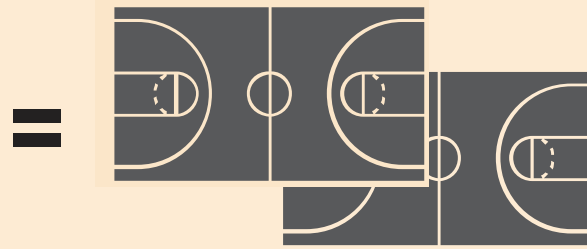
FACTS AND FIGURES



THE FEEDING HK FOODBANK IS

7,000 SQUARE FEET

(ALMOST 1.5 TIMES AS BIG AS A BASKETBALL COURT)



IT INCLUDES
WALK-IN FRIDGE
AND **FREEZER**



45 TONNES

 OF FOOD
RESCUED AND SORTED
PER MONTH

100,000

MEALS

DELIVERED
PER MONTH



14

STAFF



100+

VOLUNTEERS
PER WEEK



16,000

VOLUNTEER HOUR
PER ANNUM



4

VEHICLES



200+

FOOD
DONORS



75

PARTNER
CHARITIES



100

FOOD
ASSISTANCE
PROGRAMMES